

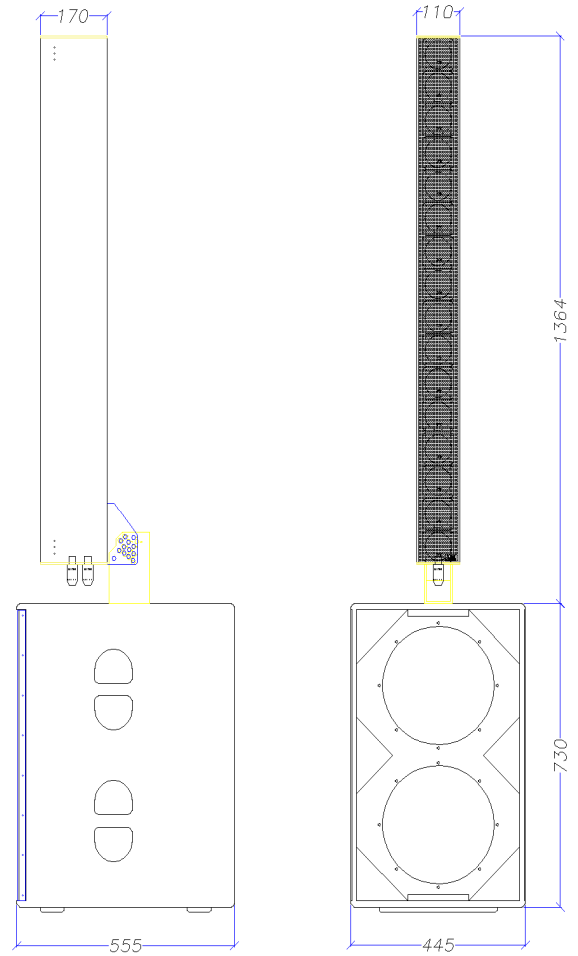
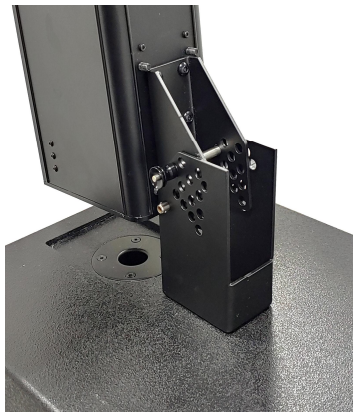
Focuser series is an extremely high performance, hybrid line source system incorporating state-of-the-art 2-way speaker technology. It combines innovative line array technology with high quality design. The system was specially developed to provide the best possible sound quality for speech and live music applications in challenging acoustic environments, as well as enabling effective integration into architectural surroundings. 3"x16 high performance speakers arranged in a column, plus 2000watts digital amplifier and DSP system, produce a very direct, cylindrical beam characteristic. At the heart of these cylindrical waveforms, the sound pressure level remains much more constant over distance compared with conventional loudspeakers. This has a very positive effect on the overall sound coverage. What's more, the sound reaches the audience more directly than with other conventional systems. Unwanted reflections from the ceiling or floor can be avoided, which greatly improves speech intelligibility especially in reverberant rooms. Using the Focuser series complex microphone set-ups can also be quickly and easily implemented. For live applications, the Focuser series can be combined with ASL Focuser-S12R subwoofers.



System	4 way, external crossover required
Component	3" fullrange x 16pcs
Voice coil diameter	18mm
Voice coil material	Copper Clad Aluminum Round Wire
Magnetic material	Neodymium
Impedance	16Ω x 16pcs
Coverage	Horizontal : 90°(-3dB) 120°(-5dB)
Sensitivity	100 dB @1m/1watt
Maximum output SPL	132dB SPL
Powerhandling	40wattsx16pcs@AES
Enclosure shape	Rectangle
Enclosure material	Aluminum
Rigging point	Customized for line type rigging
Finish	Powder painting
Colour	Black or white, custom colour
Dimensions	110mm x 1270mm x 173mm(WHD)
Weight	12Kg



Rotatable bracket with vertical and horizontal



*Focuser-316R+S12R*

Focuser series provides precise angle(-11°~+5°) control with unique feature's suspension

Focuser-316R	Powerhandling
NL4MP 1 : 1+	160watts(AES) @ 4Ω 320watts amplifier required
NL4MP 1 : 2+	160watts(AES) @ 4Ω 320watts amplifier required
NL4MP 2 : 1+	160watts(AES) @ 4Ω 320watts amplifier required
NL4MP 2 : 2+	160watts(AES) @ 4Ω 320watts amplifier required
Focuser-S12R	Specifications
Impedance	4Ω
Component	12" Ferrite , Voice coil:100mm
Powerhandling	1000watts(AES)
Connection	NL4MP 1+
Dimensions	445mm x 730mm x 555mm(WHD)